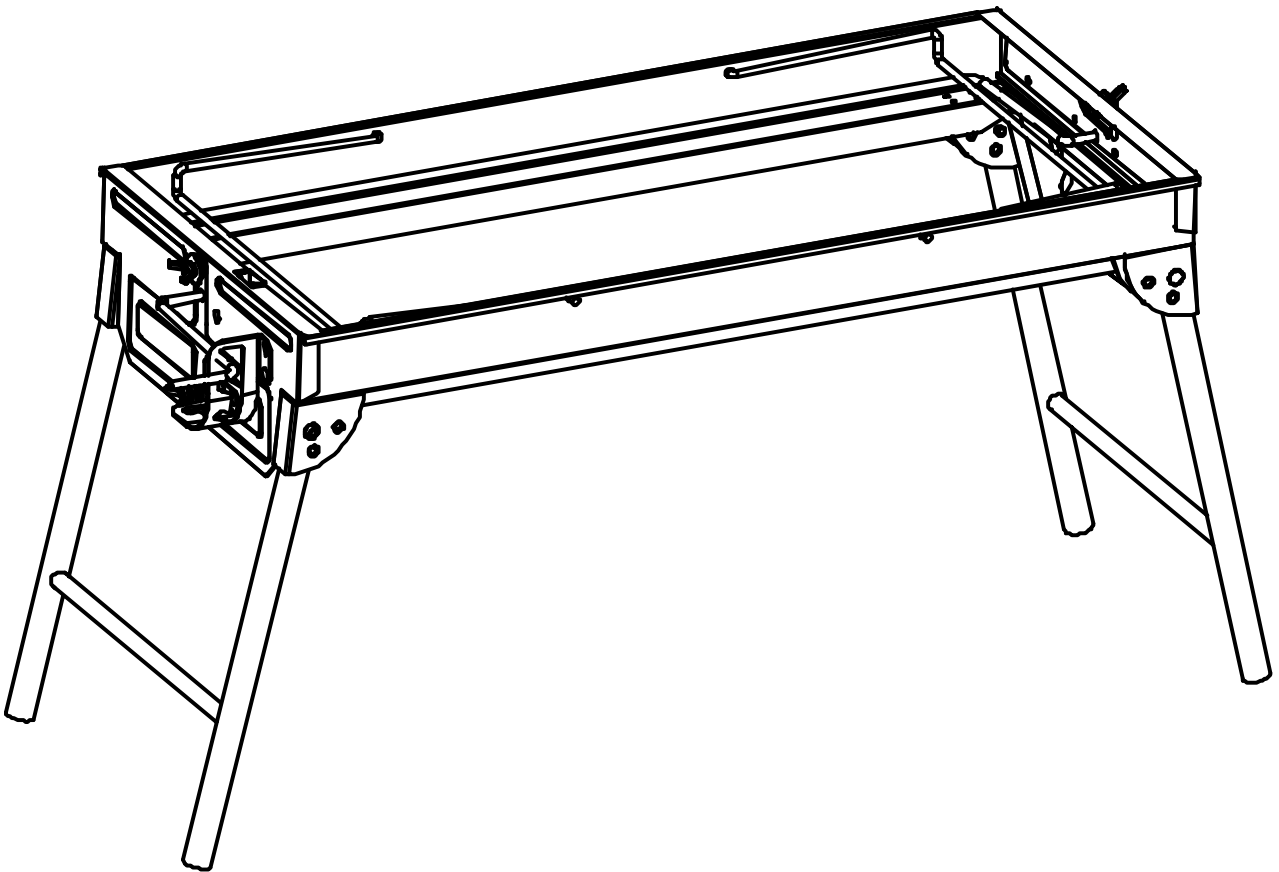


ALEKO®

Lightweight Portable Foldable Stainless Steel Charcoal Barbecue Grill with Roasting Bar



SKU: GBBQ880

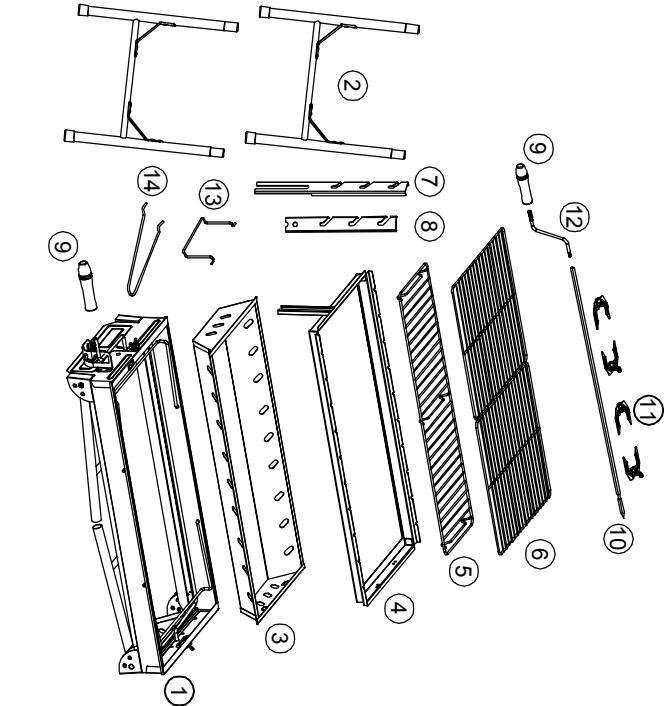
Instructions for use of stainless steel BBQ grill

Attention

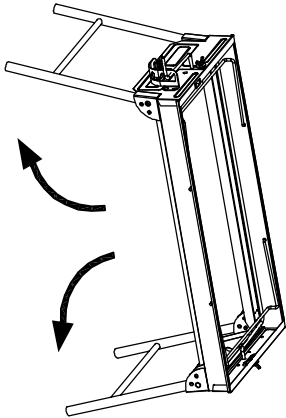
1. Please use BBQ grill outdoors. Please do not use the BBQ grill indoors to avoid unnecessary loss.
2. Before enjoying the BBQ grill, please make sure completed installation under the instruction, and all packaging and protective film shall be removed.
3. The BBQ grill should be kept in a safe, flat place. (please use the special accessories provided in the package)
4. When burning, do not touch or move the hot area of the baking dish to avoid scalding.
5. Do not pour the liquid fuel to the charcoal in the barbecue.
6. Do not let children, pets near or contact the grill.
7. After the barbecue, make sure the charcoal fire is completely out.
8. The composition is only for illustration, please according to the real object.

PARTS AND PACKAGING LIST

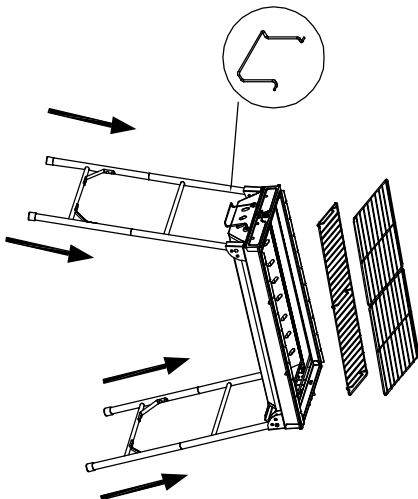
NO.	ITEMS	PCS
1	Body	1
2	Grill leg	2
3	Charcoal box	1
4	Holding bracket	1
5	Charcoal net	1
6	Bake net	2
7	Detent bracket 1	1
8	Detent bracket 2	1
9	Wood handle	2
10	Roasting bar	1
11	Rotisserie	4
12	Rotated handle	1
13	Charcoal box handle	1
14	Baking net handle	1
15	Introduction	1



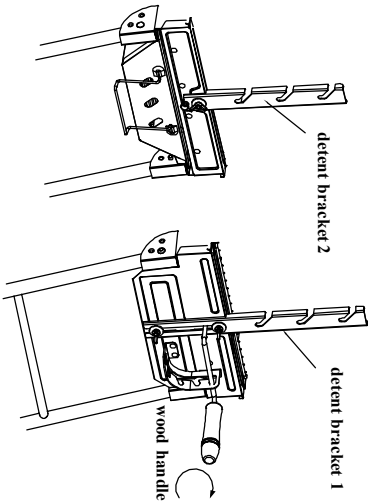
1 Rotate the grill legs to the detent pin



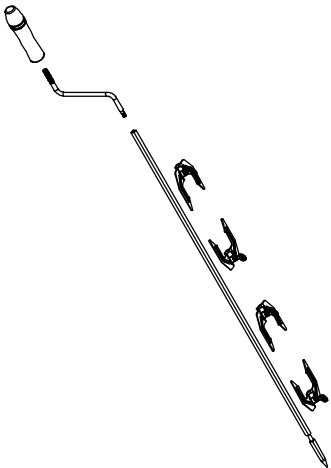
2 Install charcoal box handle, grill legs and put in charcoal net, baking net



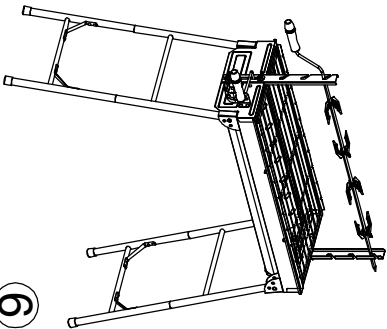
3 Install the detent bracket 1, 2 and the detent wood handle



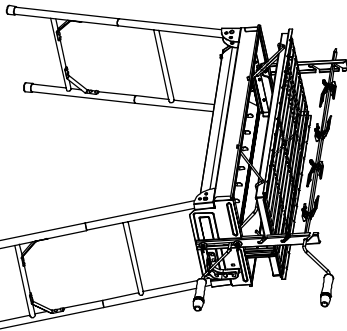
4 Install multi-function roasting bar and rotisseries (selected as needed)



5 Place the multi-functional roasting bar on the detent bracket (adjust the height according fire)



6 The detent on the side of the grill body can adjust the height of the holding bracket in the grill and adjust the heat directly. Make the barbecue convenient.



ALEKO®

8307 S 192nd St Kent, WA 98032

Phone: 833-926-2323

hello@aleko.com

www.ALEKO.com