

ALEKO®

ALEKO INFLATABLE BOAT Owner's Manual

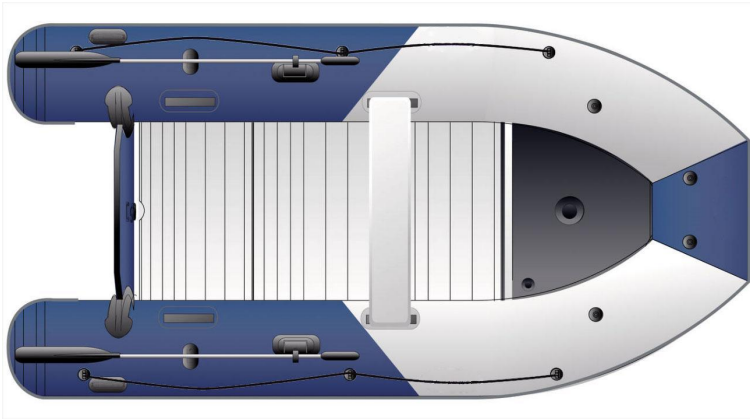


Table of contents

About your new ALEKO Inflatable Boat	2
Assembly Instruction	2
Motor Installation	2
Troubleshooting	2
Using Your ALEKO Inflatable Boat	2
Some Other Points to Remember	2

Parts List



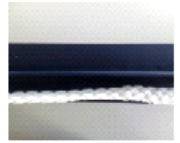
5 FOR OIL TANK



6 BENCH



7 PATCHES



8 HOGGING



9 OAR LOCK



10 OAR HOLDER



11 RUBBIN



12 PLASTIC HANDLE



13 TRANSOM HOLDER



14 TRANSOM



15 DRAIN PLUG



16 PAD

About your new ALEKO Inflatable Boat

Thank you for purchasing a ALEKO Inflatable Boat. We hope you will get many years of use from your new boat . Your ALEKO Inflatable Boat has several unique features that make it a solid and reliable boat. For future reference, record your ALEKO purchase information blow

Record Your Purchase Information Here	
Purchase Date:	
HIN(Serial#) :	
Purchase From:	

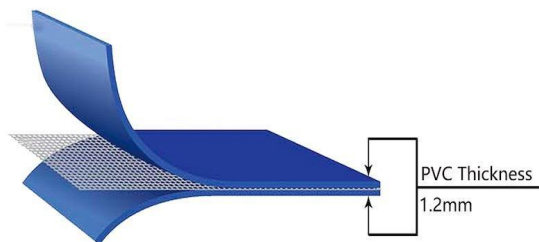
Below is a brief

overview of the structure of the boat, standard equipment, and assembly instructions.

1. What is in the box:

* Boat hull with carrying bag	* High pressure foot pump
* Floorboards or Air Floor	* Bench seat
* Stringers	* Owner's manual
* Towing rope	* Repair kit
* 2 Oars	(includes valve removal tool)

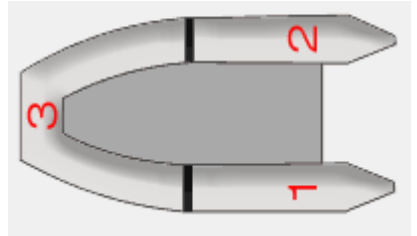
2. The 1000 Denier Hull Material



The 1000 denier hull material is a rugged, solid material that operates with a 3.6psi working pressure.

3.The Air Compartments

These ALEKO Inflatable Boats have three air chambers in the tube and an inflatable keel. The air chambers are completely separate and ensure buoyancy in the event of a single chamber failure.



4.The one-way valve

Your ALEKO boat utilizes a one-way valve, a proven design that has been used for 20 years. This simple, rugged, one-way valve makes inflation easy. The inner valve design allows air to flow into the hull but not out and the outer valve cap makes the seal permanent. The plastic stem on the inner valve allows the boat to be deflated. Push in the inner valve and turn it to release air. Make sure the plastic stem is in the out position for inflation.

5.Rear Drain Valve

All ALEKO Inflatable Boats have a rear drain valve to drain water from the inside of the hull.

6.Foot Pump



All ALEKO Inflatable Boats come with a deluxe high pressure foot pump to ensure the boat is inflated to the recommended air pressure.

Maximum Air Pressure: Tube 3.6PSI(0.25bar);Keel 3.6PSI(0.25bar)

Assembly Instruction

1. Unfold the Hull

Remove the hull from its box and take it out of the boat bag. Clear a flat space, making sure it is clean and free of sharp objects, and unfold your boat so it is laid out flat.

2. Slightly Inflate

Inflate tube chambers to approximately 30%. Inflate side tubes first, then the bow tube(s). Install either floorboards or air floor.

NOTICE: Do not use an air compressor to inflate your boat. Damage to your boat caused by over inflation is not covered by your Limited Warranty.

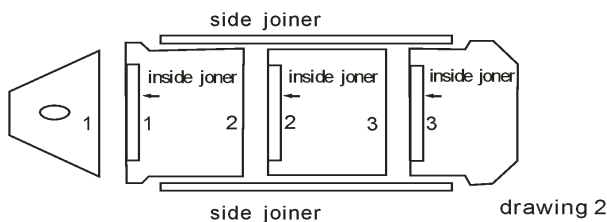
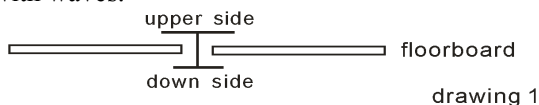
3. Floorboard Assembly

Dinghy boat Series: Slatted floor

Important: Make sure that you place the floorboards the way you can numbers up. The numbers have to correspond.

How to place the floorboards

Between each floorboard you have to stick an inside-joiner. Place the inside-joiners with the broad side up. (See drawing 1,2) With each boat there are two side-joiners which you have to place at the sides of the floorboards in the savings. These joiners make sure that wooden floor is stabilized even with waves.



1) Start with board number 1, push this as far in the nose until the valve base of the keel is in the middle of the saving in this floorboard.

2) Now place the last board number 3 or 4, push this one so far as possible under the transom.

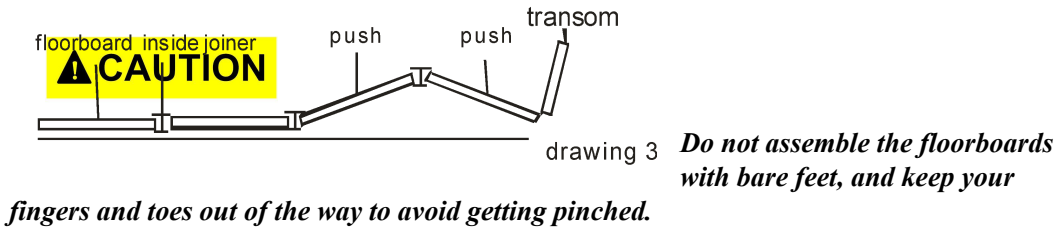
2-1) For the models having 2 inside-joiners: Place an inside-joiner on board number push board number 2 in the inside-joiner. Pull up number 2 and 3 a bit and place the other

inside-joiner between until boat boards fit in it.

Now push down both boards carefully.(See drawing 3)

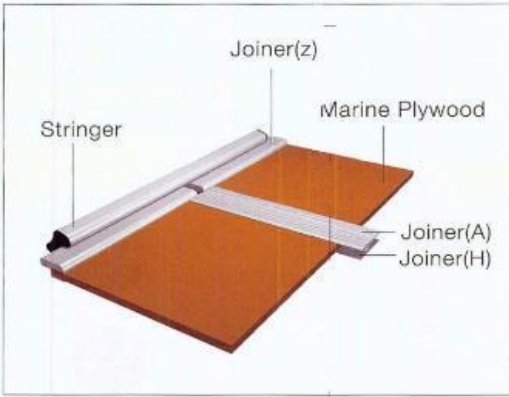
2-2) For the models having 3 inside-joiners: Place an inside-joiner on board number 1 and push number 2 in it. Place another inside-joiner on board number 2 and push number 3 in it. Pull up number 3 and 4 a bit and place the other what between until both boards fit in it. Now push down both boards carefully (See drawing 3)

You will notice that the first couple of times you place the floorboards it will not go easy. After a while it will all go easier because the material shall stretch.



Stringers

Insert aluminum stringers into side edges of the floorboards making sure that the stringers overlap each board to ensure floorboards are straight and rigid.



Motor Installation

The maximum rated horsepower for ALEKO Inflatable Boats is as follows:

Model	Net weight	Max power	Max load	Max person
BT250	55kgs 121lbs	6KW 8HP	350kgs 770lbs	3

BT320	60kgs 132lbs	11KW 15HP	450kgs 990lbs	4
BT380	85kgs 188lbs	18KW 25HP	650kgs 1430lbs	6
BT420	100kgs 220lbs	22KW 30HP	750kgs 1650lbs	7



If you install a motor larger than the maximum rated horsepower for your boat, you could have control problems and risk serious injury. Never exceed the maximum rated horsepower.

Read the instruction manual supplied by the outboard motor manufacturer.

Outboard motor specifications vary and some require special installation procedures. Below is a general outline:

- Set the motor in the full upright tilt position.
- Place the motor in the center of the transom.
- Screw the mounting brackets securely to the transom.



If you exceed the maximum capacities(or weight limit) for your boat, you could have control problems, capsize or swamp and risk serious injury. Never exceed the maximum capacity.

Troubleshooting

1. Leaks

If you are losing air pressure (unrelated to cold weather), check the boat for leaks, starting with the valve. The best tool to find leaks is soapy water in a spray bottle. Spray soapy water around the valve. If you see bubbles forming, check your valve seating and base and be sure the valve insert is screwed tight using the valve removal tool located in the repair kit. If you continue to have problems, it may be necessary to replace the valve.

2. Finding Punctures

If the boat is losing air, and all the valves are not leaking, you may have a small puncture. Small punctures can be repaired easily. Spray soapy water around the inside and outside of the hull until air bubbles reveal the position of the leak.

3. Rips or Tears

Yours ALEKO Inflatable Boat come with a repair kit as standard equipment. If you no longer have your repair kit, you can order a new one from your dealer. Cut a patch of repair material large enough to overlap the damaged area by approximately 1/2", and round off the edges. The repair area must be roughed up using sandpaper or other abrasive material for glue to properly adhere to the area. Apply glue to the under side of the repair patch and around the area to be repaired. Too much glue will interfere with a proper repair. Allow adhesive to become tacky for 2-4 minutes, and then place the repair patch on the damaged area. Use a weight to apply 3-5 lbs. of pressure for 12 hours. After the repair patch has dried, apply glue around the edges for a complete seal (dry 4 hours).

4. Large and Difficult

If you have a difficult repair, contact your local dealer for advice on the best way to fix your boat.

Using Your ALEKO Inflatable Boat

1.Rowing

ALEKO Inflatable Boats are equipped with oars and oar locks as standard equipment. The oars can be attached to swiveling oarlocks which allow for easy rowing.

2.Motoring & Safety

All boats have their own unique handling characteristics, so take time to familiarize yourself with how your boat maneuvers in various conditions. Basic seamanship is beyond the scope of this owner's manual, but we would like to go over a few fundamentals.

- It is your responsibility to be aware of and comply with all relevant safety regulations.
- In all water sports, you should have reasonable swimming ability.
- Always respect the sea and the weather, as both can change rapidly and have surprised even the most seasoned mariners.
- Always use U.S. Coast Guard or C.E. approved life jackets, as this is your assurance that the life jackets can provide sufficient buoyancy in the water.
- We strongly suggest that all boater enroll in one of the excellent water safety courses offered by the Power Squadron or Coast Guard Auxiliary.

Some Other Points to Remember

- After 2 or 3 days, there may be a small decrease of pressure due to temperature change.
- Before undertaking along trip, inflate the boat for a full 24 hours to be sure all chambers are completely airtight.
- Do not allow children to drive the boat unsupervised by adults.
- Avoid sharp objects when coming to dock or shore.
- Always bring your oars along, installed in place.
- If you see water coming into the boat, check the following:
 - ① Is the drain valve open?
 - ② Is the diaphragm in the drain valve working properly?
 - ③ Has it rained recently?
 - ④ Is there a hole in the floor?

Cleaning & Storage:

- ① Wash off sand and dirt and let completely dry before storage.
- ② Do not use harsh chemical cleaners or cleaners containing abrasives. Cleaners containing silicone are not recommended as these may adversely affect the hull material.
- ③ Do not store in extreme temperatures(*i.e.*, over 150F/below - 10F).
- ④ Store in a clean and dry place.

Dealer Information:

Copyright 2016 ALEKO. All rights reserved. No part of this manual may be reproduced or transmitted in any form or by any means without the express written permission of ALEKO.

ALEKO Inflatable Boats, website: www.AlekoProducts.com