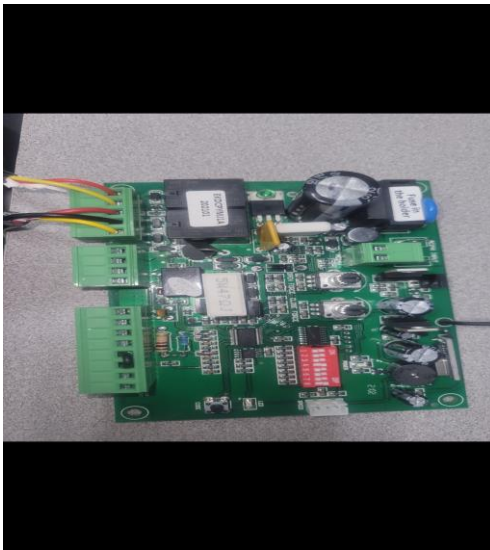


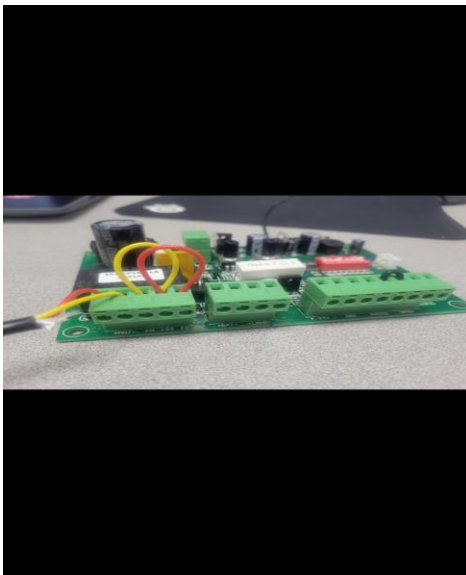
AR 900 LIMIT SWITCH TEST

If Gate operator only working in one cycle (Open / Close)

Or if your Opener is ignoring your Gate magnets please Attempt this Limit Switch Test

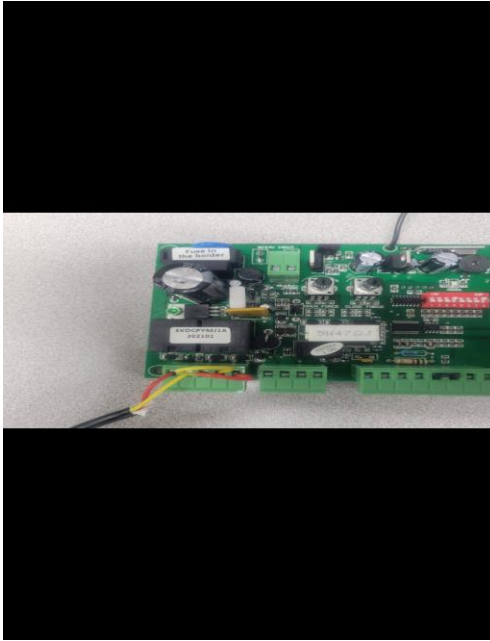


1.) Remove the limit switch wires from ports (OP, CO, CL) on circuit board



2.) Jumper those same ports with (2) spare 18 gauge wires. Connect the first wire to ports OP and CO, and connect the second wire to ports CO and CL. This will allow the unit to work successfully in both directions *if* the limit switch is the issue.

Note: This jumper test will cause the unit not to respect the magnet stop points, so ensure that you manually stop the unit before those points.



Lastly,

If the test works as intended,
replace the limit switch

If the unit is still not operational,
replace the circuit board.

[Event Date] [Event Time][Event
Address, City, ST ZIP Code]

ALEKO®

AUTHOR: MIGUEL CANIZALES, TECHNICAL AGENT

8307 S 192nd St Kent WA 98032

(833) 926-2323 | hello@alekoproductions.com | ALEKOPRODUCTS.COM